

BERKELEYSQUARE

Floor Plans — West Wing

Ground Floor

BEDROOMS



FLOOR



WEST WING LAYOUT

Apartments: W0/01 - W0/32



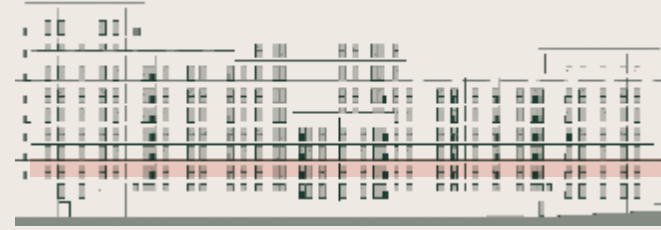
Name	Area	
	Sq'ft	M ²
W 0/01	456	42.40
W 0/02	680	63.20
W 0/03	696	64.70
W 0/04	698	64.80
W 0/05	984	91.40
W 0/06	698	64.80
W 0/07	663	61.60
W 0/08	457	42.50
W 0/09	457	42.50
W 0/10	907	84.30
W 0/11	456	42.40
W 0/12	560	52.00
W 0/13	935	86.90
W 0/14	450	41.80
W 0/15	832	77.30
W 0/16	737	68.50
W 0/17	450	41.80
W 0/18	928	86.20
W 0/19	928	86.20
W 0/20	718	66.70
W 0/21	855	79.40
W 0/22	889	82.60
W 0/23	461	42.80
W 0/24	837	77.80
W 0/25	517	48.00
W 0/26	527	49.00
W 0/27	698	64.80
W 0/28	476	44.20
W 0/29	698	64.80
W 0/30	459	42.60
W 0/31	677	62.90
W 0/32	456	42.40

First Floor

BEDROOMS

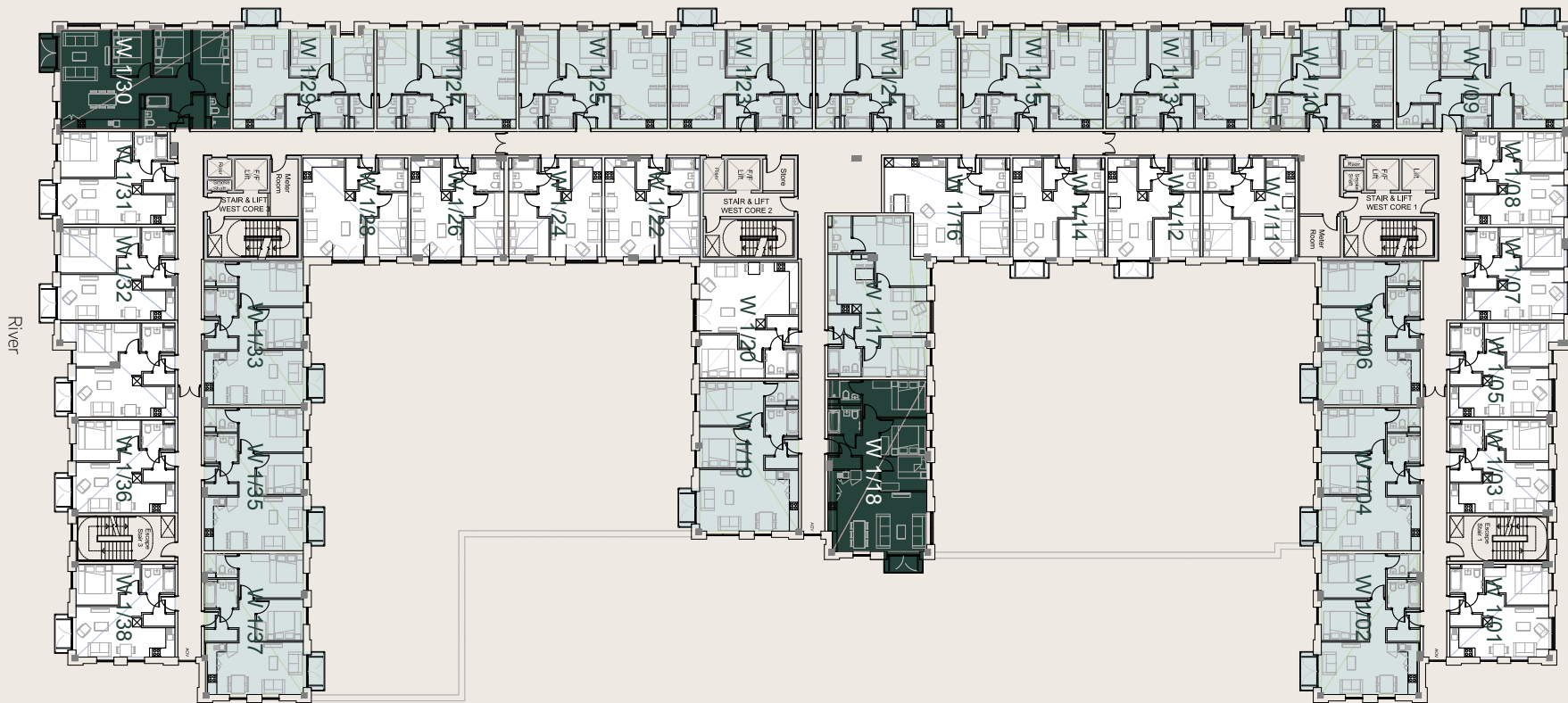


FLOOR



WEST WING LAYOUT

Apartments: W1/01 - W1/38



Name	Area	
	Sq'ft	M ²
W 1/01	456	42.40
W 1/02	680	63.20
W 1/03	459	42.60
W 1/04	698	64.80
W 1/05	479	44.50
W 1/06	698	64.80
W 1/07	459	42.60
W 1/08	459	42.60
W 1/09	817	75.90
W 1/10	685	63.60
W 1/11	453	42.10
W 1/12	455	42.30
W 1/13	693	64.40
W 1/14	454	42.20
W 1/15	686	63.70
W 1/16	552	51.30
W 1/17	752	69.90
W 1/18	832	77.30
W 1/19	731	67.90
W 1/20	563	52.30
W 1/21	692	64.30
W 1/22	464	43.10
W 1/23	694	64.50
W 1/24	467	43.40
W 1/25	718	66.70
W 1/26	461	42.80
W 1/27	679	63.10
W 1/28	516	47.90
W 1/29	674	62.60
W 1/30	826	76.70
W 1/31	517	48.00
W 1/32	527	49.00
W 1/33	698	64.80
W 1/34	476	44.20
W 1/35	698	64.80
W 1/36	459	42.60
W 1/37	677	62.90
W 1/38	456	42.40

Second Floor

BEDROOMS

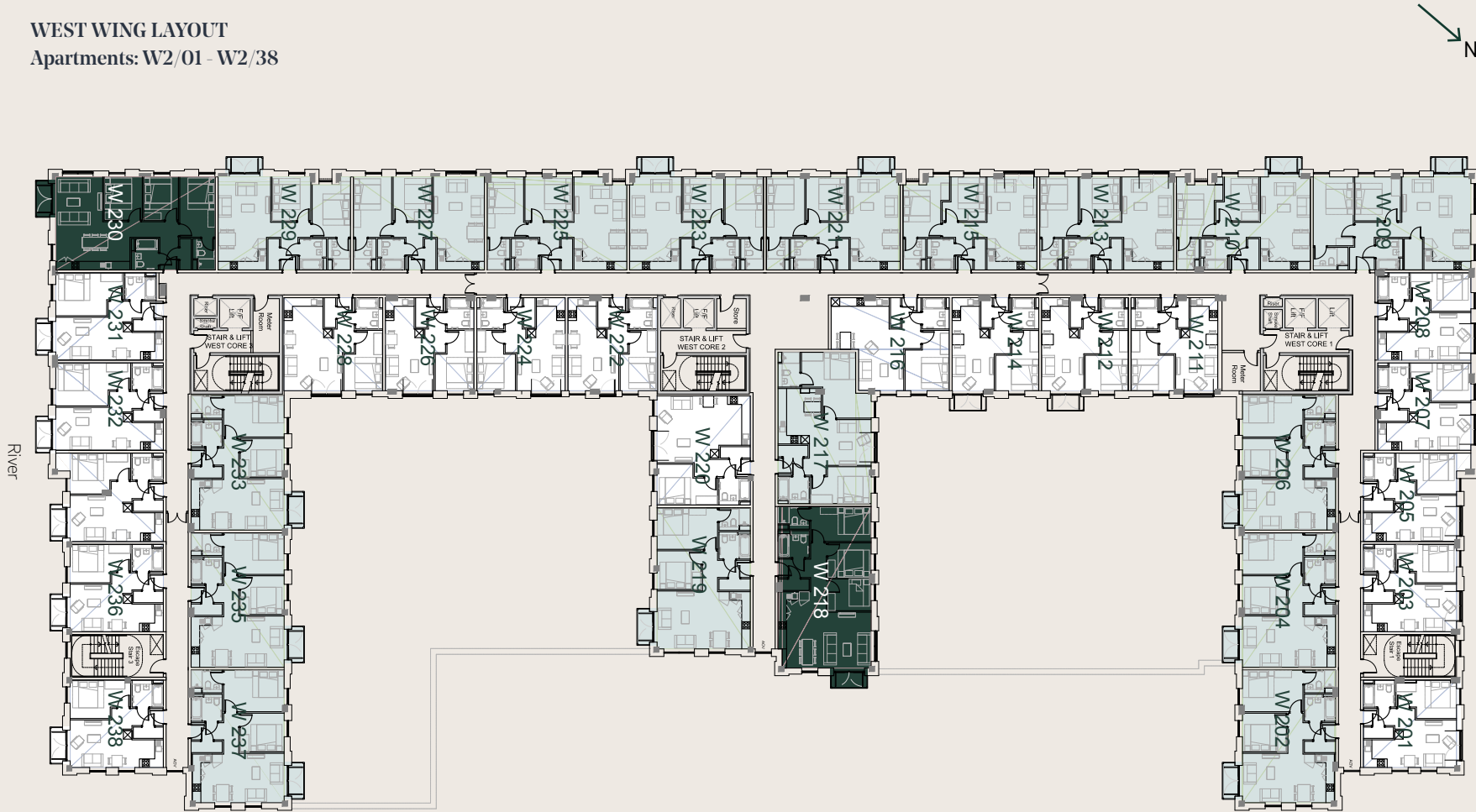


FLOOR



WEST WING LAYOUT

Apartments: W2/01 - W2/38



Name	Area	
	Sq'ft	M ²
W 2/01	456	42.40
W 2/02	680	63.20
W 2/03	459	42.60
W 2/04	698	64.80
W 2/05	479	44.50
W 2/06	698	64.80
W 2/07	459	42.60
W 2/08	459	42.60
W 2/09	817	75.90
W 2/10	685	63.60
W 2/11	455	42.30
W 2/12	455	42.30
W 2/13	693	64.40
W 2/14	454	42.20
W 2/15	686	63.70
W 2/16	552	51.30
W 2/17	749	69.60
W 2/18	832	77.30
W 2/19	731	67.90
W 2/20	563	52.30
W 2/21	692	64.30
W 2/22	464	43.10
W 2/23	694	64.50
W 2/24	467	43.40
W 2/25	718	66.70
W 2/26	461	42.80
W 2/27	679	63.10
W 2/28	516	47.90
W 2/29	674	62.60
W 2/30	826	76.70
W 2/31	517	48.00
W 2/32	527	49.00
W 2/33	698	64.80
W 2/34	476	44.20
W 2/35	698	64.80
W 2/36	459	42.60
W 2/37	677	62.90
W 2/38	456	42.40

Third Floor

BEDROOMS

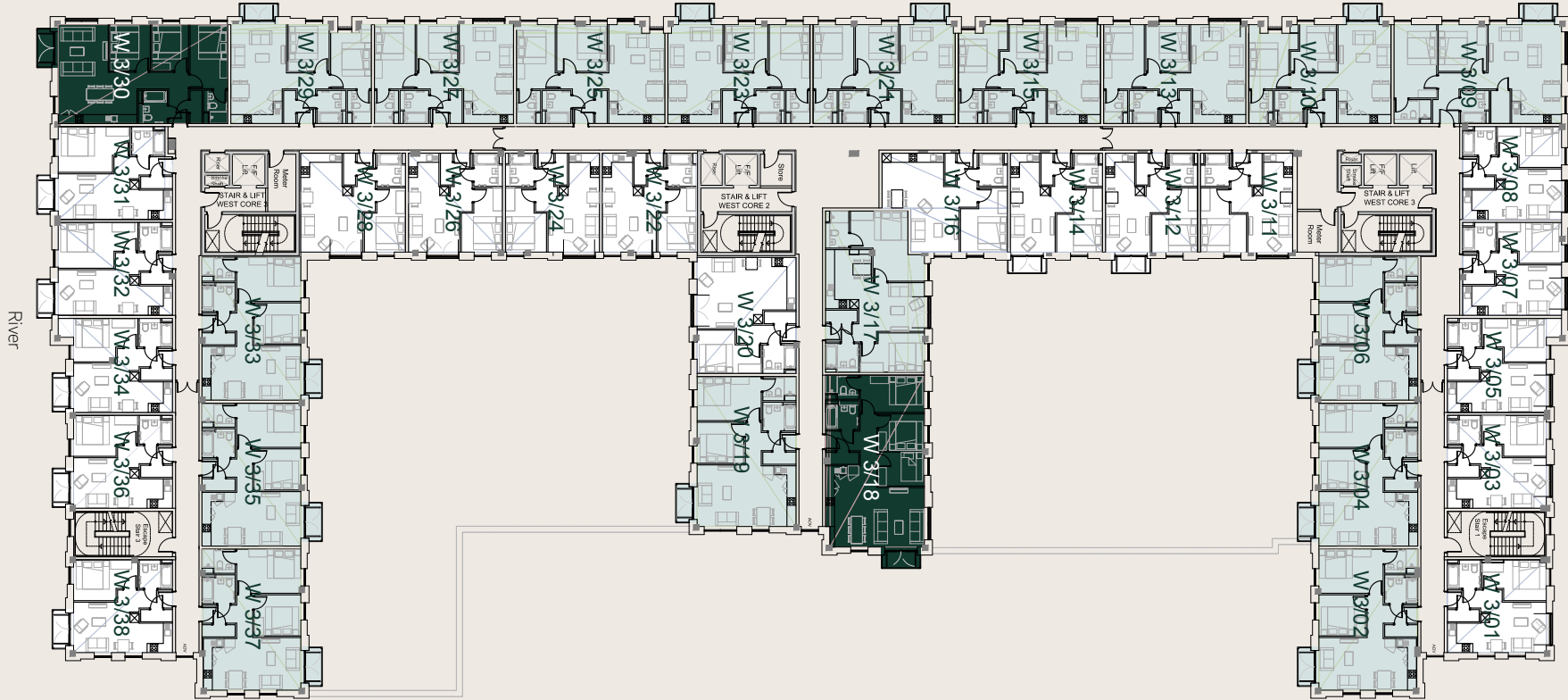


FLOOR



WEST WING LAYOUT

Apartments: W3/01 - W3/38



Name	Area	
	Sq'ft	M ²
W 3/01	456	42.40
W 3/02	680	63.20
W 3/03	459	42.60
W 3/04	698	64.80
W 3/05	479	44.50
W 3/06	698	64.80
W 3/07	459	42.60
W 3/08	459	42.60
W 3/09	817	75.90
W 3/10	685	63.60
W 3/11	455	42.30
W 3/12	455	42.30
W 3/13	693	64.40
W 3/14	454	42.20
W 3/15	686	63.70
W 3/16	552	51.30
W 3/17	752	69.90
W 3/18	832	77.30
W 3/19	731	67.90
W 3/20	563	52.30
W 3/21	692	64.30
W 3/22	464	43.10
W 3/23	694	64.50
W 3/24	467	43.40
W 3/25	718	66.70
W 3/26	461	42.80
W 3/27	679	63.10
W 3/28	516	47.90
W 3/29	674	62.60
W 3/30	826	76.70
W 3/31	517	48.00
W 3/32	527	49.00
W 3/33	698	64.80
W 3/34	476	44.20
W 3/35	698	64.80
W 3/36	459	42.60
W 3/37	677	62.90
W 3/38	456	42.40

Fourth Floor

BEDROOMS

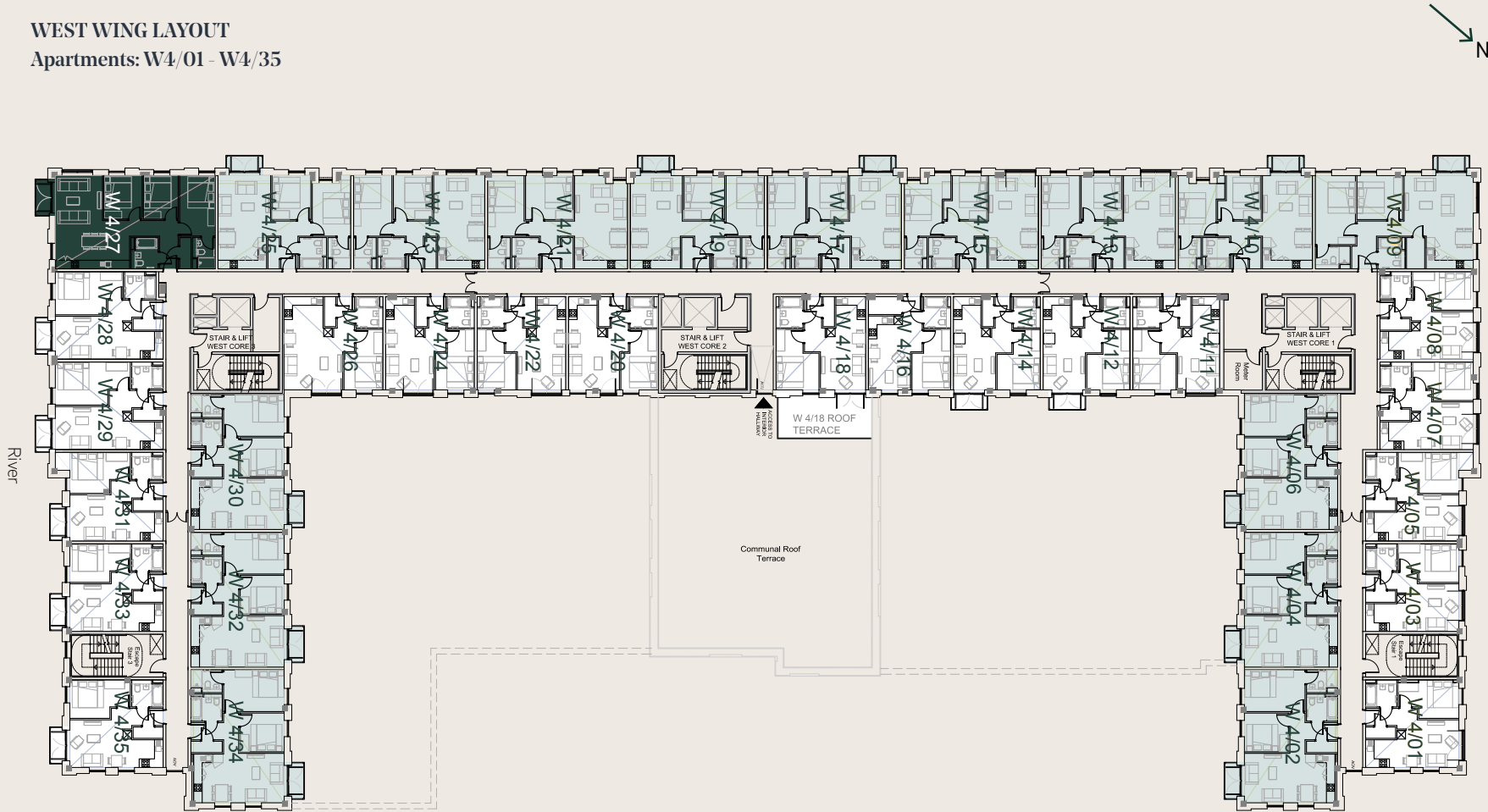


FLOOR



WEST WING LAYOUT

Apartments: W4/01 - W4/35



Name	Area	
	Sq'ft	M ²
W 4/01	456	42.40
W 4/02	680	63.20
W 4/03	459	42.60
W 4/04	698	64.80
W 4/05	479	44.50
W 4/06	698	64.80
W 4/07	459	42.60
W 4/08	459	42.60
W 4/09	817	75.90
W 4/10	685	63.60
W 4/11	455	42.30
W 4/12	455	42.30
W 4/13	693	64.40
W 4/14	454	42.20
W 4/15	686	63.70
W 4/16	429	39.90
W 4/17	692	64.30
W 4/18	469	43.60
W 4/19	694	64.50
W 4/20	464	43.10
W 4/21	718	66.70
W 4/22	467	43.40
W 4/23	679	63.10
W 4/24	461	42.80
W 4/25	674	62.60
W 4/26	516	47.90
W 4/27	826	76.70
W 4/28	517	48.00
W 4/29	527	49.00
W 4/30	698	64.80
W 4/31	476	44.20
W 4/32	698	64.80
W 4/33	459	42.60
W 4/34	677	62.90
W 4/35	456	42.40

Fifth Floor

BEDROOMS

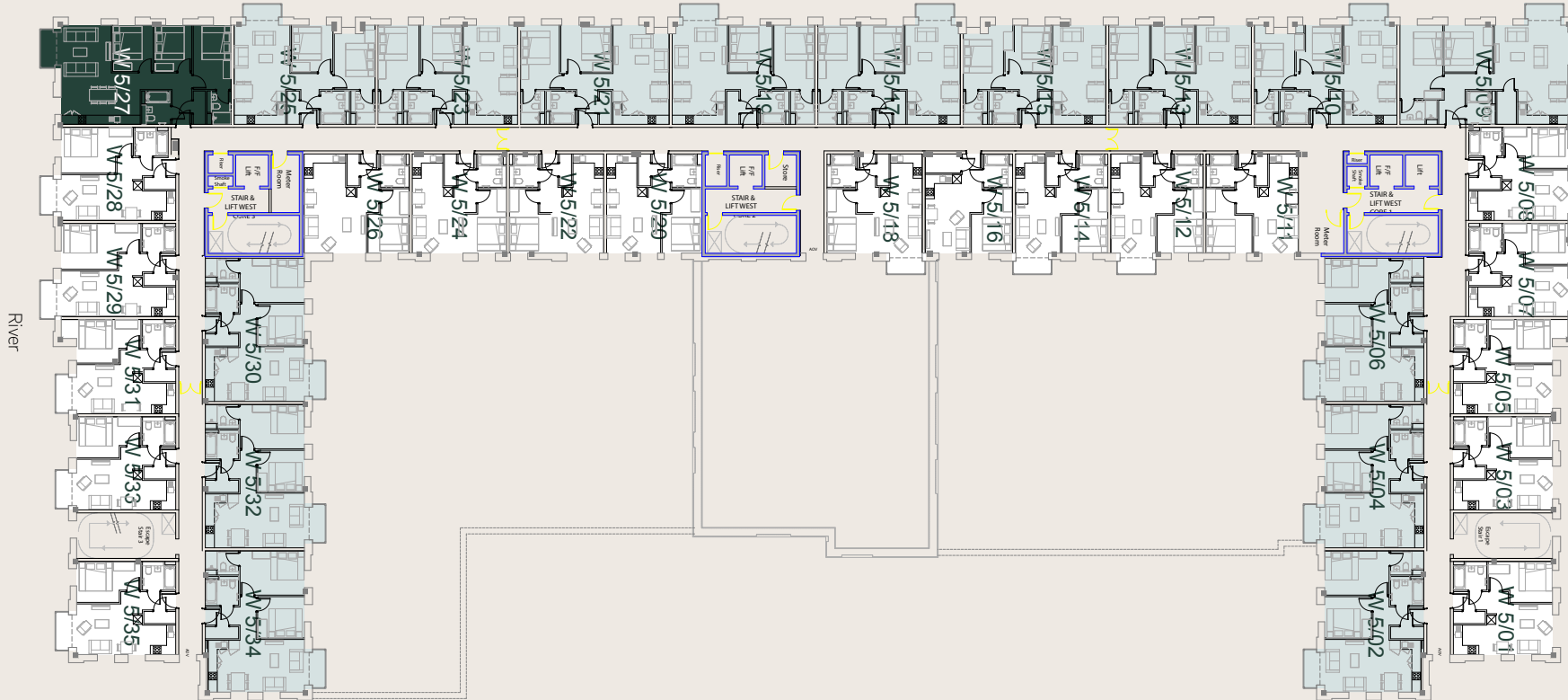


FLOOR



WEST WING LAYOUT

Apartments: W5/01 - W5/35



Name	Area	
	Sq'ft	M ²
W 5/01	456	42.40
W 5/02	680	63.20
W 5/03	459	42.60
W 5/04	698	64.80
W 5/05	479	44.50
W 5/06	698	64.80
W 5/07	459	42.60
W 5/08	459	42.60
W 5/09	817	75.90
W 5/10	685	63.60
W 5/11	455	42.30
W 5/12	455	42.30
W 5/13	693	64.40
W 5/14	454	42.20
W 5/15	686	63.70
W 5/16	429	39.90
W 5/17	692	64.30
W 5/18	469	43.60
W 5/19	694	64.50
W 5/20	464	43.10
W 5/21	718	66.70
W 5/22	461	42.80
W 5/23	679	63.10
W 5/24	461	42.80
W 5/25	674	62.60
W 5/26	516	47.90
W 5/27	826	76.70
W 5/28	517	48.00
W 5/29	527	49.00
W 5/30	698	64.80
W 5/31	476	44.20
W 5/32	698	64.80
W 5/33	459	42.60
W 5/34	677	62.90
W 5/35	456	42.40

Six Floor

BEDROOMS

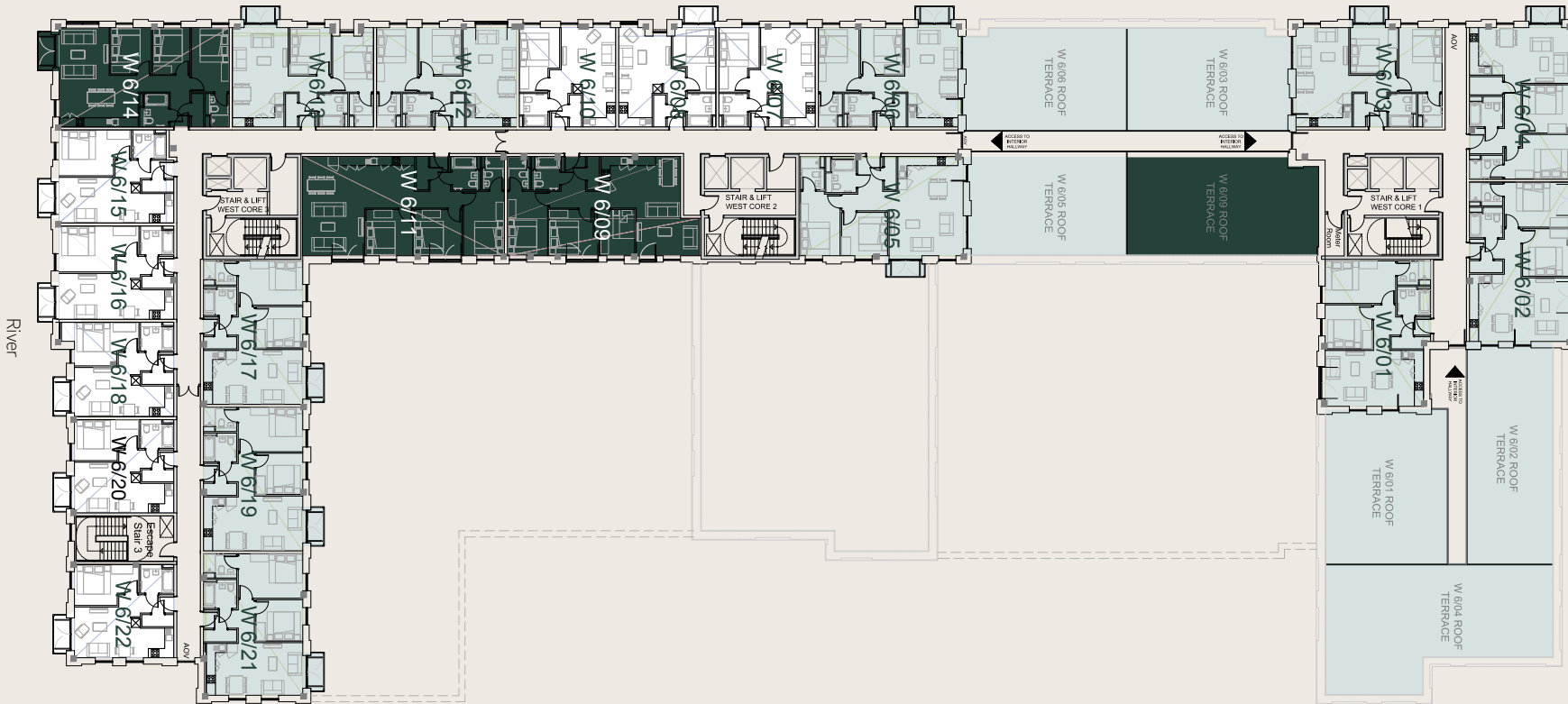


FLOOR



WEST WING LAYOUT

Apartments: W6/01 - W6/22



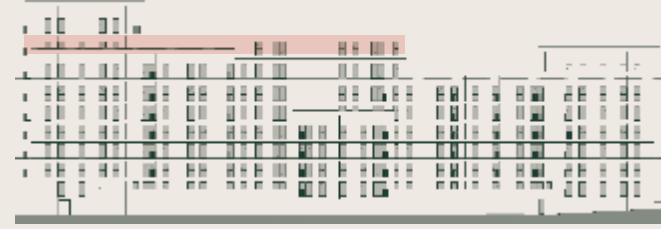
Name	Area	
	Sqft	M ²
W 6/01	717	66.63
W 6/02	773	71.78
W 6/03	710	65.97
W 6/04	736	68.35
W 6/05	786	73.06
W 6/06	681	63.23
W 6/07	471	43.80
W 6/08	468	43.44
W 6/09	875	81.30
W 6/10	474	44.06
W 6/11	973	90.42
W 6/12	680	63.17
W 6/13	675	62.67
W 6/14	826	76.73
W 6/15	517	48.05
W 6/16	528	49.05
W 6/17	698	64.80
W 6/18	476	44.20
W 6/19	698	64.80
W 6/20	459	42.60
W 6/21	677	62.90
W 6/22	456	42.40

Seventh Floor

BEDROOMS

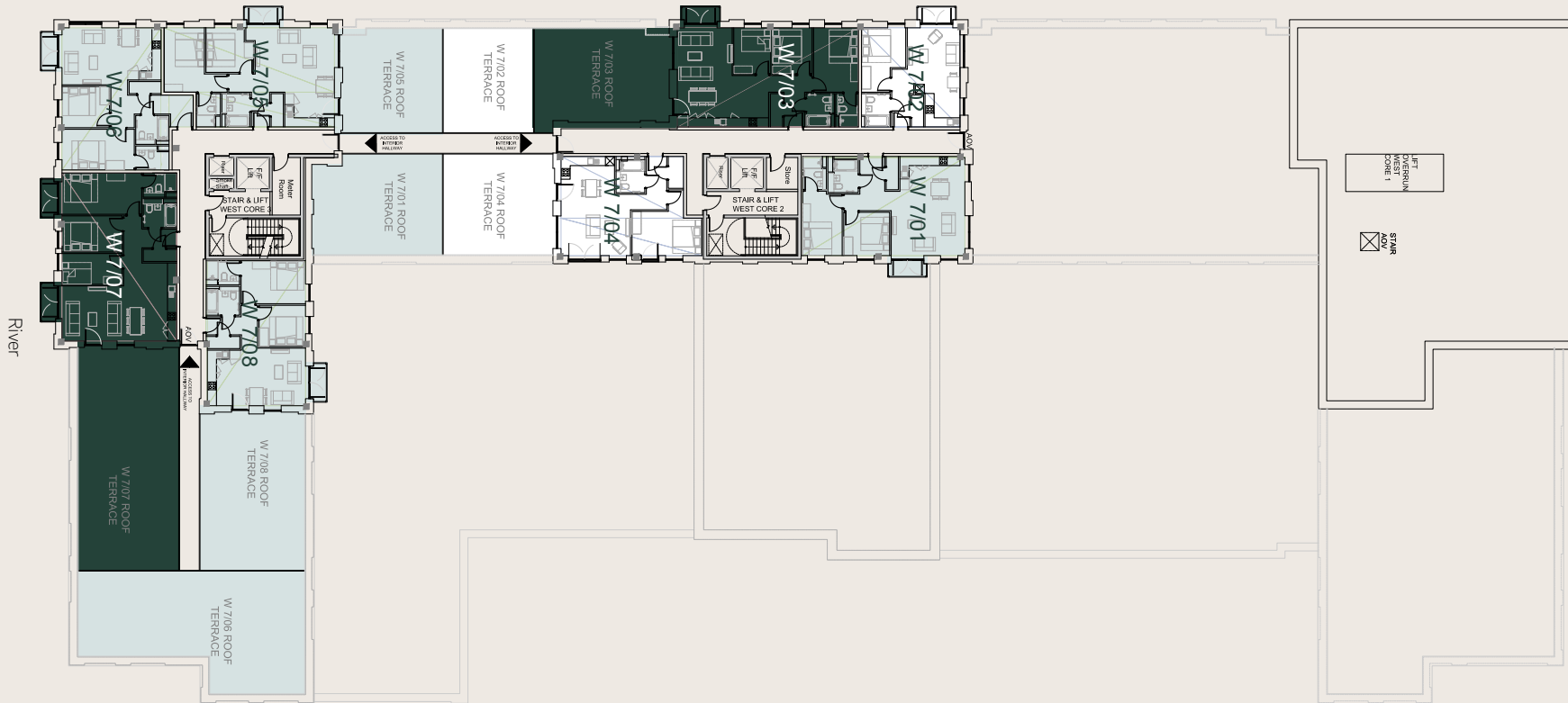


FLOOR



WEST WING LAYOUT

Apartments: W7/01 - W7/08



Name	Area	
	Sq'ft	M ²
W 7/01	787	73.10
W 7/02	485	45.06
W 7/03	878	81.58
W 7/04	635	59.00
W 7/05	777	72.17
W 7/06	760	70.64
W 7/07	939	87.21
W 7/08	694	64.43

Eighth Floor

BEDROOMS



FLOOR



Name	Area	
	Sq'ft	M ²
W 8/01	891	82.80
W 8/02	760	70.64
W 8/03	939	87.20
W 8/04	692	64.30

WEST WING LAYOUT

Apartments: W8/01 - W8/04



berkeleysquaremanchester.co.uk

+44 161 768 7701

"Alliance Investments Ltd" give notice that:

1. They are not authorised to make or give any representations or warranties in relation to the property either here or elsewhere, either on their own or otherwise. They assume no responsibility for any statement that may be made in these particulars. These particulars do not form part of any offer or contract and must not be relied upon as statement or representations of fact.
2. Any areas, measurements or distances are approximate. Figures provided for living costs (for example, service charges) are estimates only and may be subject to change. The text, images, and plans are for guidance only and are not necessarily comprehensive. It should not be assumed that the property has all necessary planning, building regulations or other consents and Alliance Investments Ltd have not tested any services, equipment or facilities. Purchasers must satisfy themselves by inspection or otherwise.
3. These particulars were prepared from preliminary plans and specifications before the completion of the properties. These particulars, together with any images and/or figures that they contain, are intended only as a guide. Properties may have been changed during construction and final finishes could vary. Prospective purchasers should not rely on this information but must get their solicitor to check the plans, specification and property information provided during the sales process. Any product names referenced are indicative of the quality and may be subject to change in the final specification. The developer retains the right to amend the final specification of properties.